



# IMPACT CHILDREN'S MENTAL HEALTH THROUGH CORPORATE PARTNERSHIPS & SPONSORSHIPS

Corporate partners, special event sponsors, and major gifts from individuals and private foundations are essential to closing the funding gaps for children's mental health and educational programs at Orchard Place.

## **ACCESS FOR ALL - \$135,000/YEAR**

Orchard Place is one of Iowa's largest "safety net" providers – we care for youth regardless of their family's ability to pay for services. Your sponsorship and contributions help ensure access to mental health care for youth including school-based and center-based therapy.

## **SUMMER SCHOOL CLOSES THE GAP - \$75,000/YEAR**

Orchard Place Campus provides Summer School for all youth in residential treatment. Youth with intensive mental, emotional, and behavioral health concerns are often significantly behind grade level when they arrive at Orchard Place. Summer School with individualized learning plans and support helps close the gap. We rely on generous contributors to help cover the cost of hiring certified teachers and teaching assistants.

## **ENRICHMENT PREVENTS SUMMER SLIDE - \$50,000/YEAR**

The Enrichment program at Orchard Place – PACE provides eight weeks of summer camp for more than 50 youth from low-to-moderate income families. Enrichment students grow through educational, social-emotional, and recreational opportunities that prevent the loss of learning while building new skills too. Sponsorships and charitable contributions will make Enrichment programming possible for the summer of 2023.

## **CHILDREN'S FUND SHOWS COMPASSION - \$40,000/YEAR**

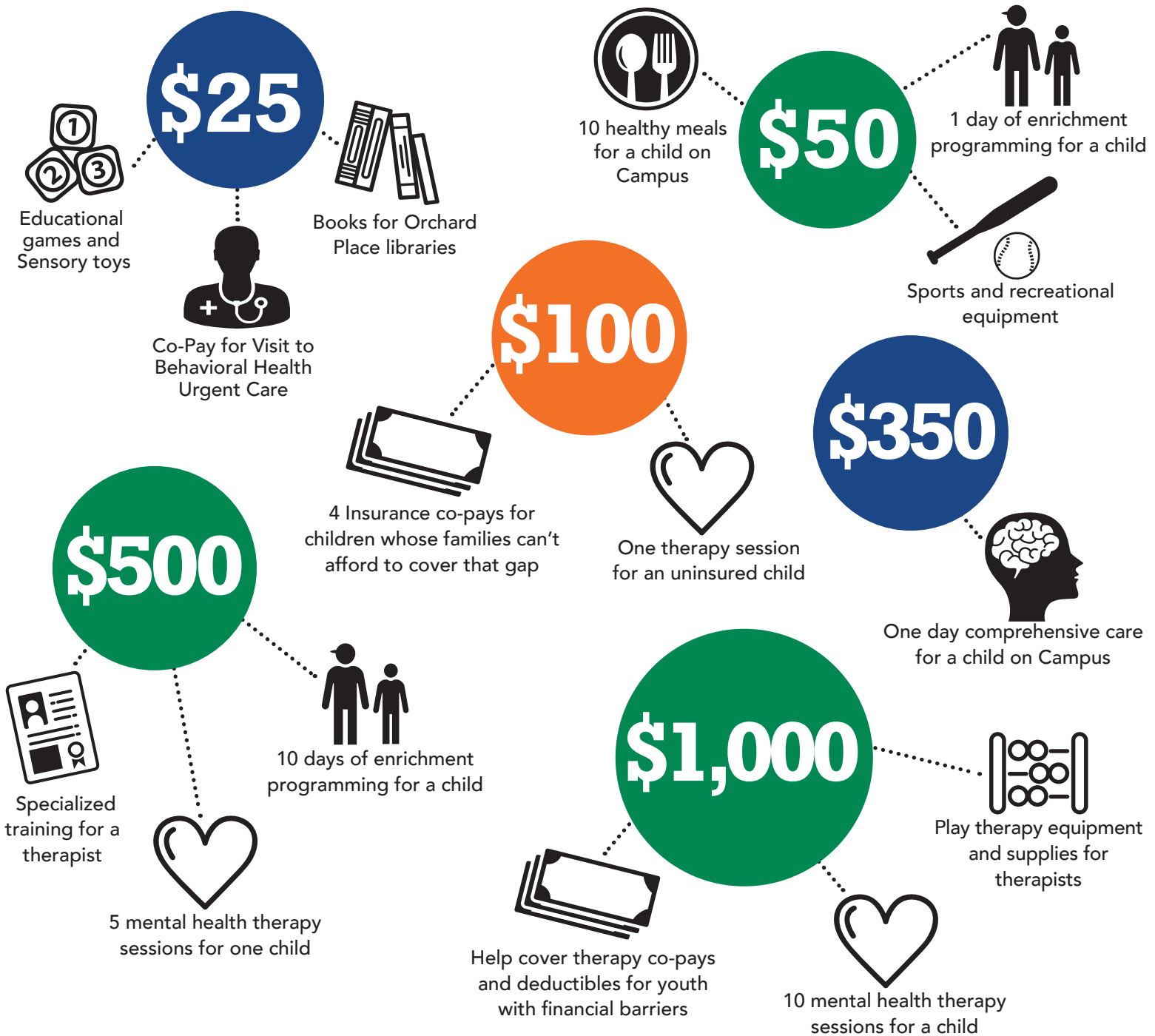
The Orchard Place Children's Fund assists families struggling to cover basic needs such as rent, food, clothing, and utilities. Sponsors and individual donors help us meet these critical needs for families whose children are receiving services through Orchard Place.

## **EMBEDDING DIVERSITY, EQUITY, INCLUSION AT ORCHARDPLACE - \$35,000/YEAR**

Orchard Place is committed to embracing and building a culture where diversity is valued, while creating a more equitable and inclusive environment for clients, families, employees, and community members. As a corporate partner, sponsor, or donor you will help fund our DEI work including trainings and initiatives.

DEVELOPING STRONG FUTURES

# ORCHARD PLACE



**GIVE TO ORCHARD PLACE, DEVELOP STRONG FUTURES**

**ONLINE GIVING** - <https://www.orchardplace.org/donation>

**WENDY INGHAM, VICE PRESIDENT OF DEVELOPMENT**

wingham@orchardplace.org • 515.287.9610 • 925 SW Porter Avenue, Des Moines, Iowa 50315